



VOJENSKÉ LESY A STATKY ČR, s.p.
ODDĚLENÍ DIVIZE HOŘOVICE

SPRÁVA SLUŽEB **MIROŠOV**

YAL
120

Timberjack



VOJENSKÉ LESY A STATKY ČR, s.p.
divize Hořovice



Timberjack

Timberjack

1070D

VÄRMLANDS ENHET



Timberjack

30m



Timberjack

Timberjack



Timberjack

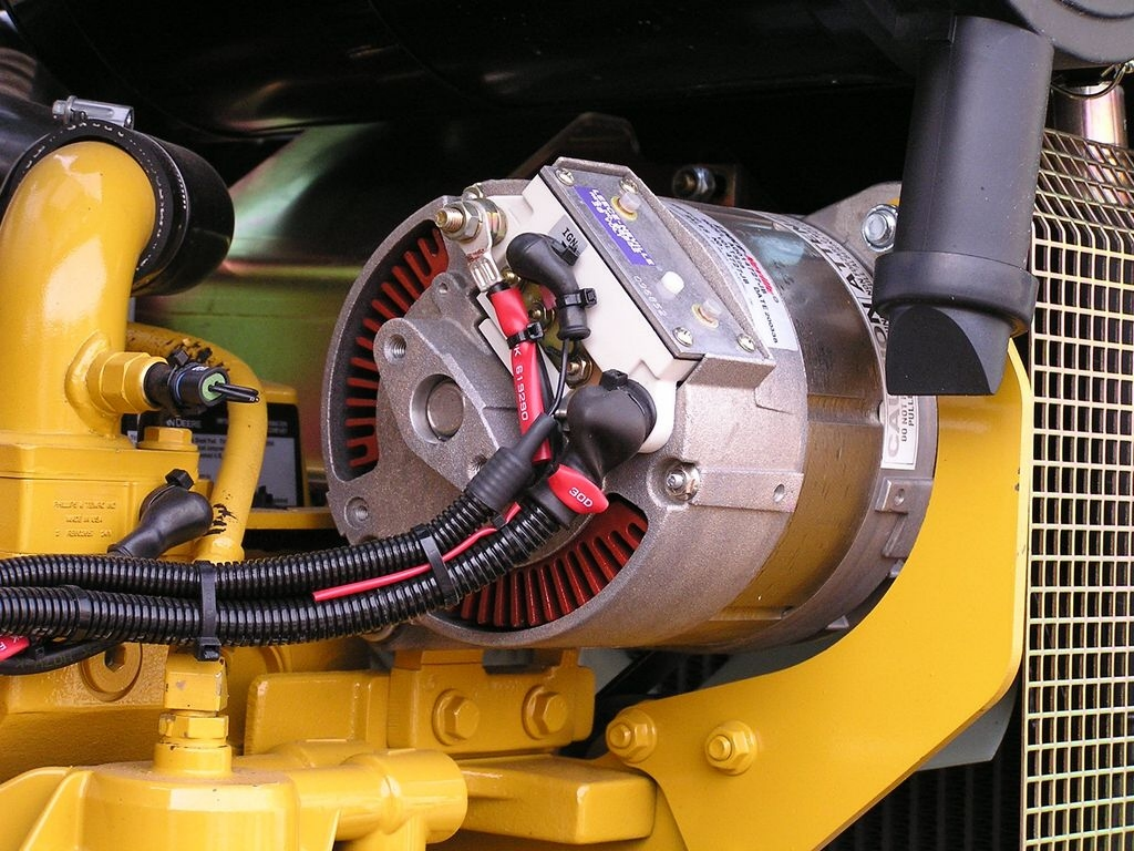
1070D

Timberjack

STEERN - VERMÄGENST 500

DIABATTI

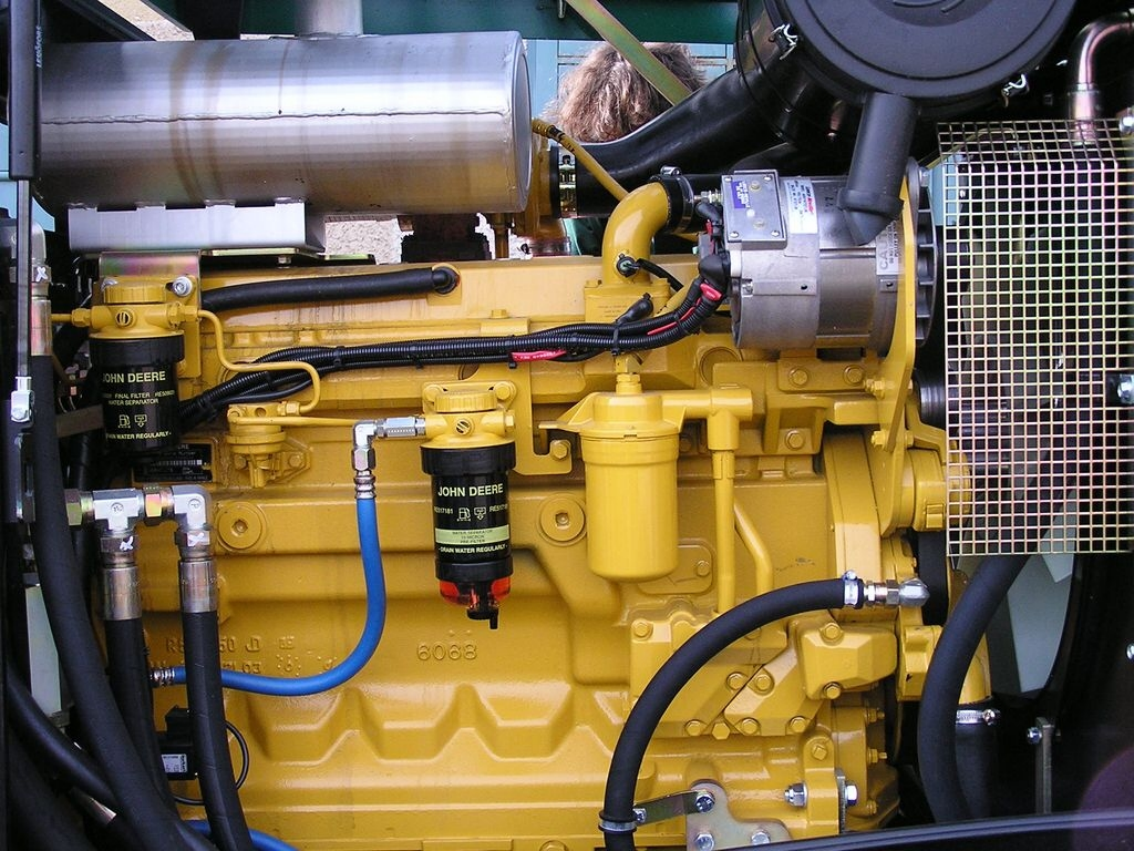
BANČIČIA
S.V.



NO OIL - PULL

STOP

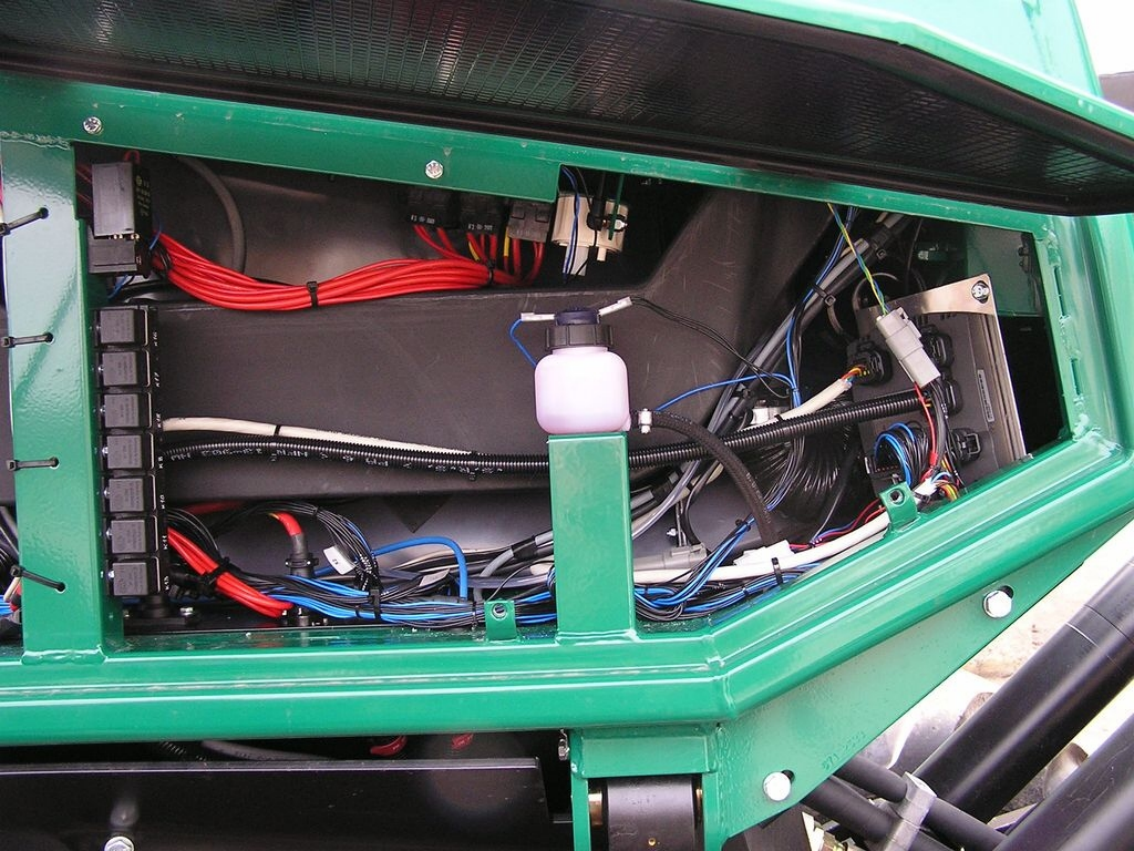
START

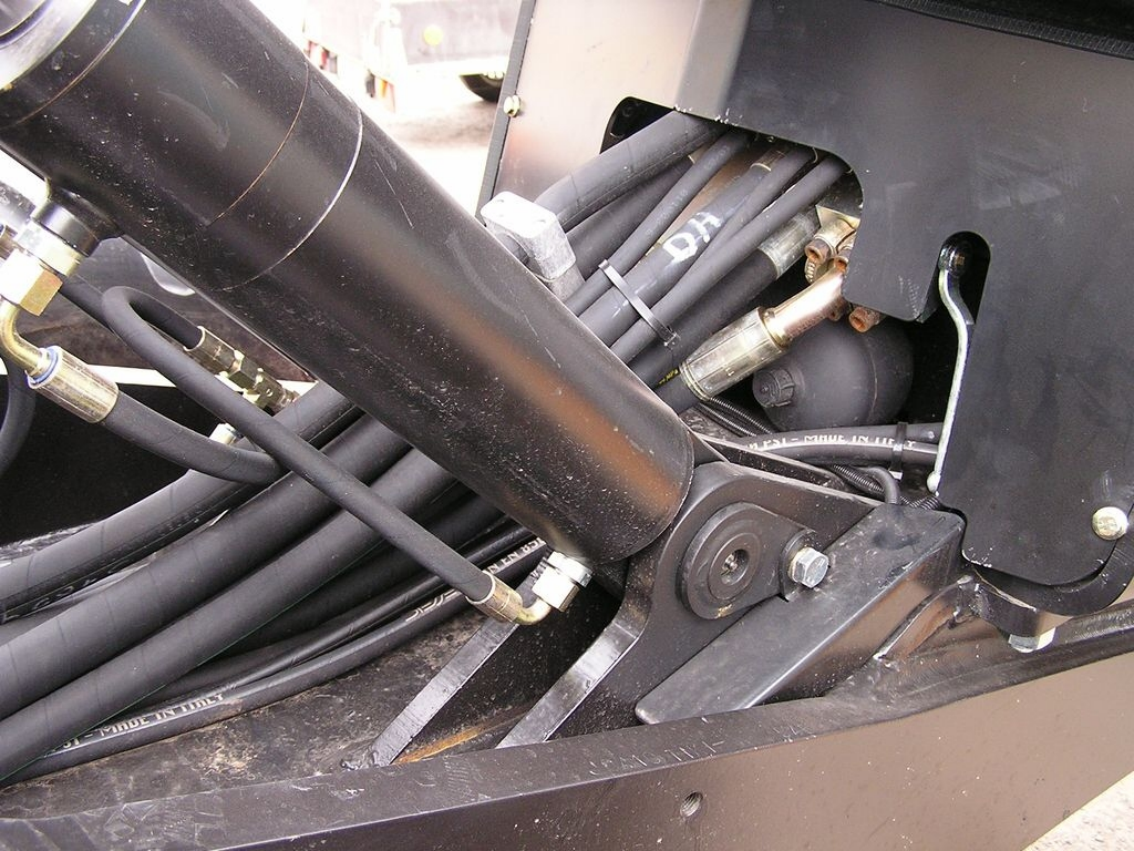


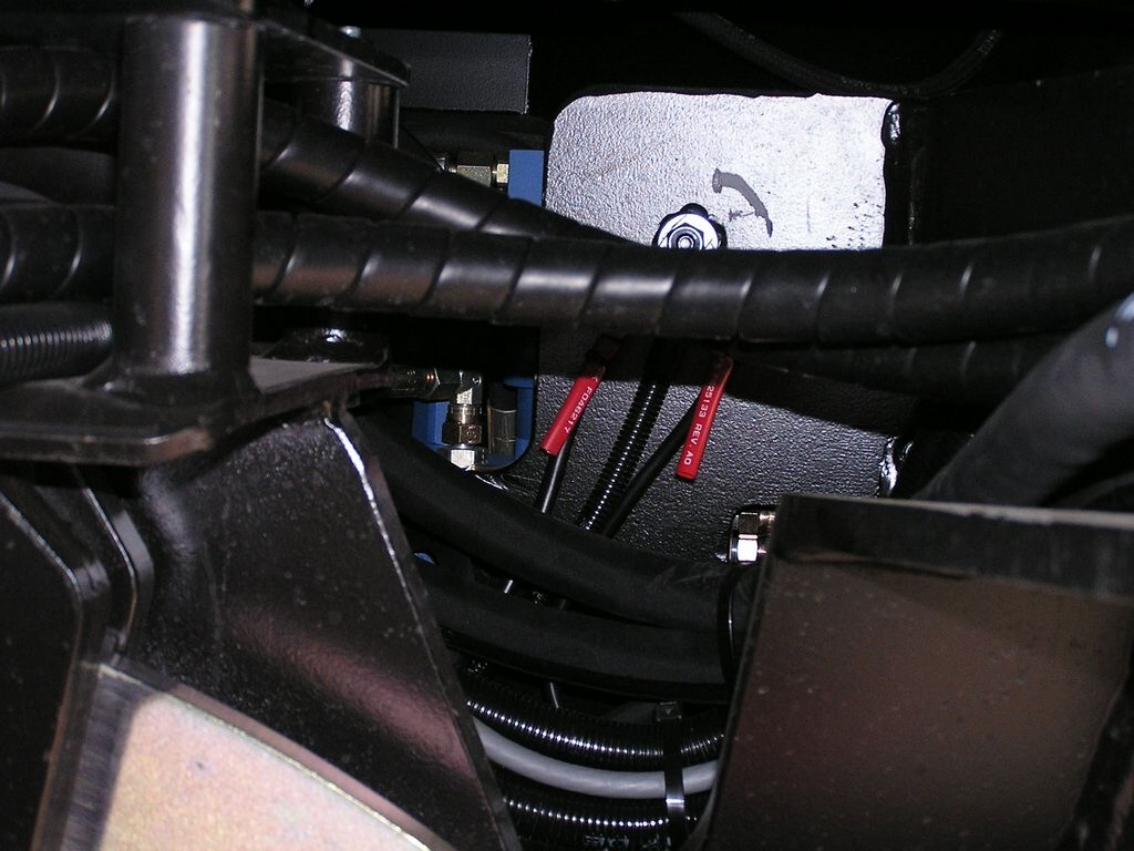
LEECE-NEVILLE
REG. NO. 96852
28 VOLT

096852

LEECE-NEVILLE
AMP S140
MODEL A0014727JB
VOLTS 28
SALES NO. 4727JB
DATE 200338
MANUFACTURED IN USA BY LEECE-NEVILLE ELECTRIC, INC.









HYDAC INTERNATIONAL
FLUTEC Fluidtechnische Geräte GmbH
24 V / DC 0,2 KW - 12 A
- (A1) IP65 (A2) +

F3

F4

F5



IMPORTANT
R-134a A/C System
Service only by qualified personnel. Contains R-134a refrigerant, XH-7 or XH-9 desiccant, and PAG oil.

17



4 1/2

CAUTION
Pressure applied to create new pipe joints. Use approved pipe joint compound.

DO NOT
WARRANTY VOID AND RETURNED TO THE POINT OF PURCHASE IF THE UNIT IS REPAIRED BY ANY OTHER THAN THE ORIGINAL MANUFACTURER.

SAE J2064 TYPE C 25 mm (1 1/8")
SAE J2064 TYPE C 25 mm (1 1/8")
3902B





F023972

bio-
hydraulik

SE 46

Hydraulický olej

**Používat pouze olej
v kvalitě podle
specifikace
výrobce**

Timberjack Scaler

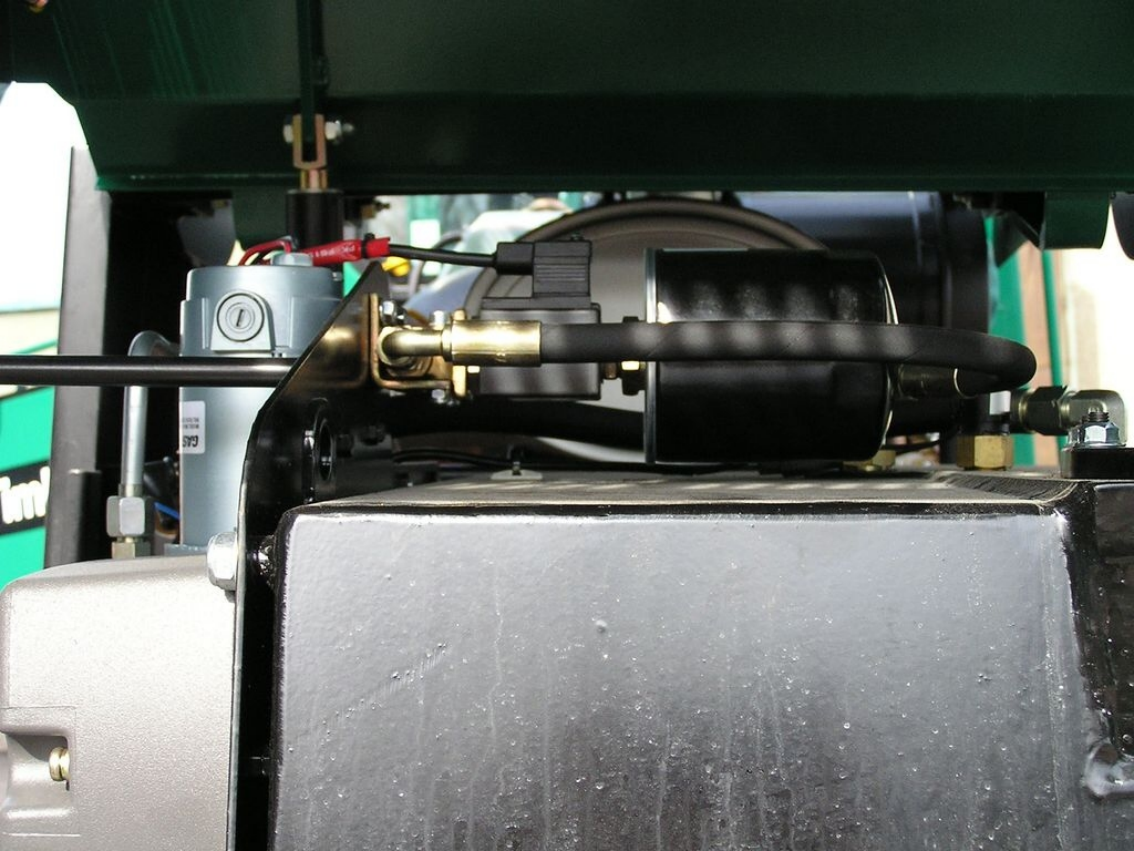
CHG
RDY

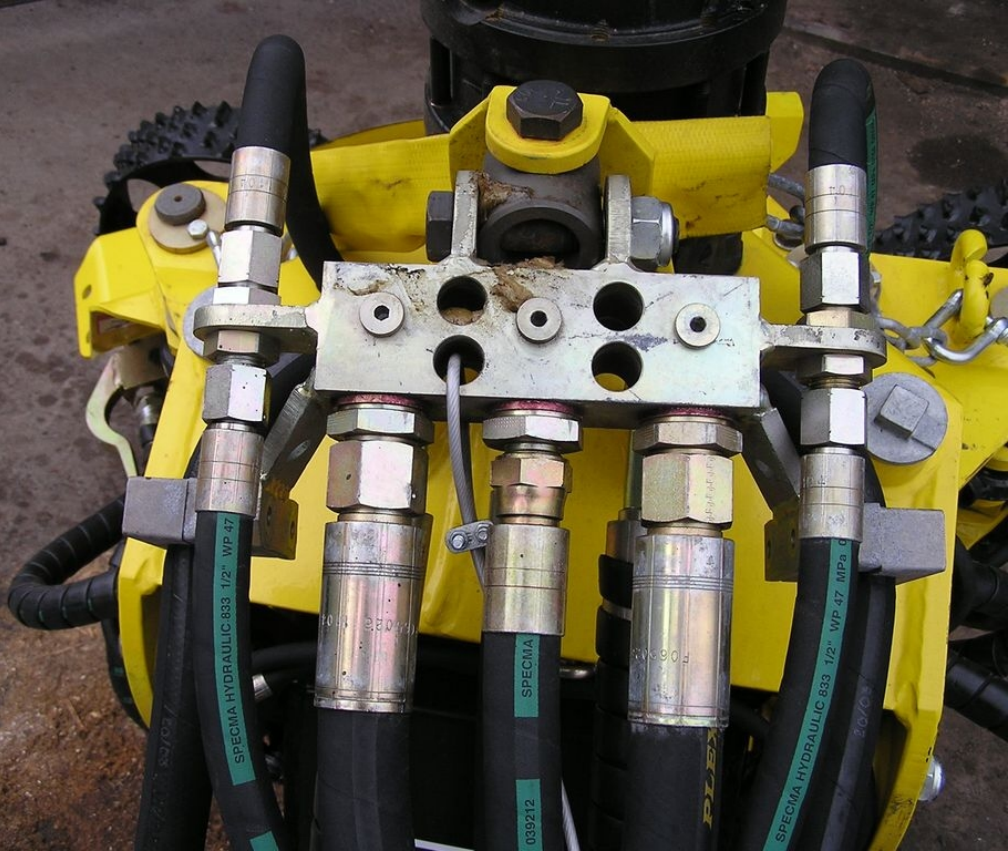
< 1	2 abc	3 -	4 +	5 f
6 mno	7 pqrs	8 .	9 wxyz	0 ↓
<	>	SHIFT	MENU	





Timberjack Scaler





SPECMA HYDRAULIC 833 1/2" WP 47

SPECMA

039212

SPECMA HYDRAULIC 833 1/2" WP 47 MPa G
30/03



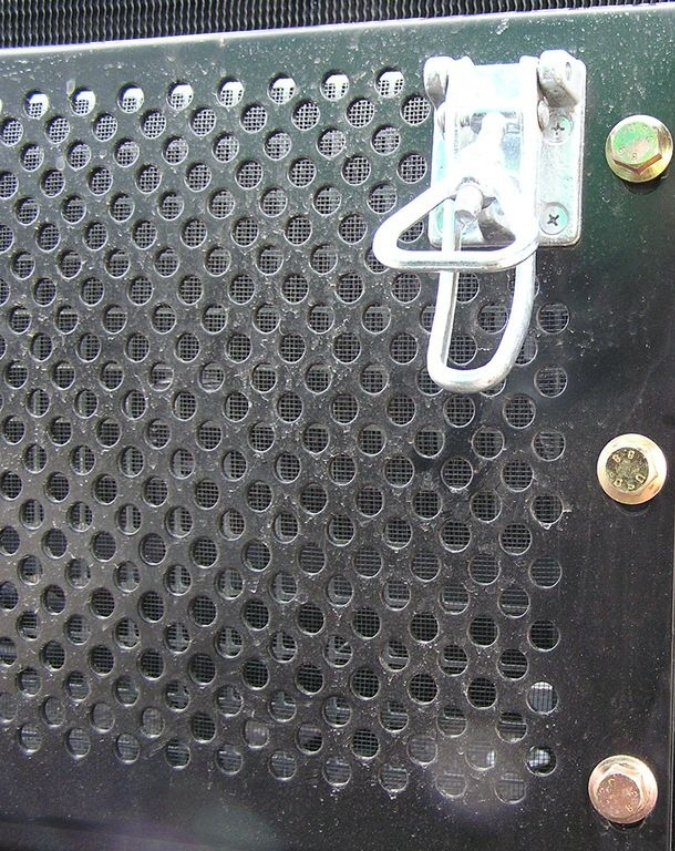
574

HYDRAULIC
CONTROL
VALVE



NEBEZPEČENÍ
Při práci s hydraulickým systémem
používejte ochranné pomůcky
a dodržujte bezpečnostní předpisy.







REV. AC F826649

JOHN DEERE

RE517181



RE517181

WATER SEPARATOR
10 MICRON
PRE-FILTER

- DRAIN WATER REGULARLY -

6068



DEERE

RES1718

REGULATOR
OPERATION
PRESSURE
REGULATOR -
REGULARLY

DEERE

FILTER RES090031
SEPARATOR

REGULARLY

RV-20-01V-0-175-50125
Made in Germany 50/03
B-KM-A
R1100



LAUER DANPOSS
HYDRAULIC MOTOR
No. [] [] [] [] [] []





KLIMAANLAGE

Füllzeit	<u>18.3.-04</u>	
Kühlmittel	R 134a	
Kühlmittel-		
menge	<u>1,5</u>	kg
Öltyp	<u>PAG</u>	
Hochdruck	<u>38</u>	bar

F036501

JOHN DEERE

RE509031 FINAL FILTER RE509031
WATER SEPARATOR



- DRAIN WATER REGULARLY -



Abs.
Coeff.

DEERE & COMPANY Moline, ILLINOIS MADE IN FRANCE



R12EXUS 36
SPECMA HYDRAULIC 833 1/2 WP 57 MPa

SPECMA
SPECMA HYDRAULIC 833 1/2 WP 57 MPa

SPECMA
SPECMA HYDRAULIC 833 1/2 WP 57 MPa

SPECMA
SPECMA HYDRAULIC 833 1/2 WP 57 MPa

7A

7A



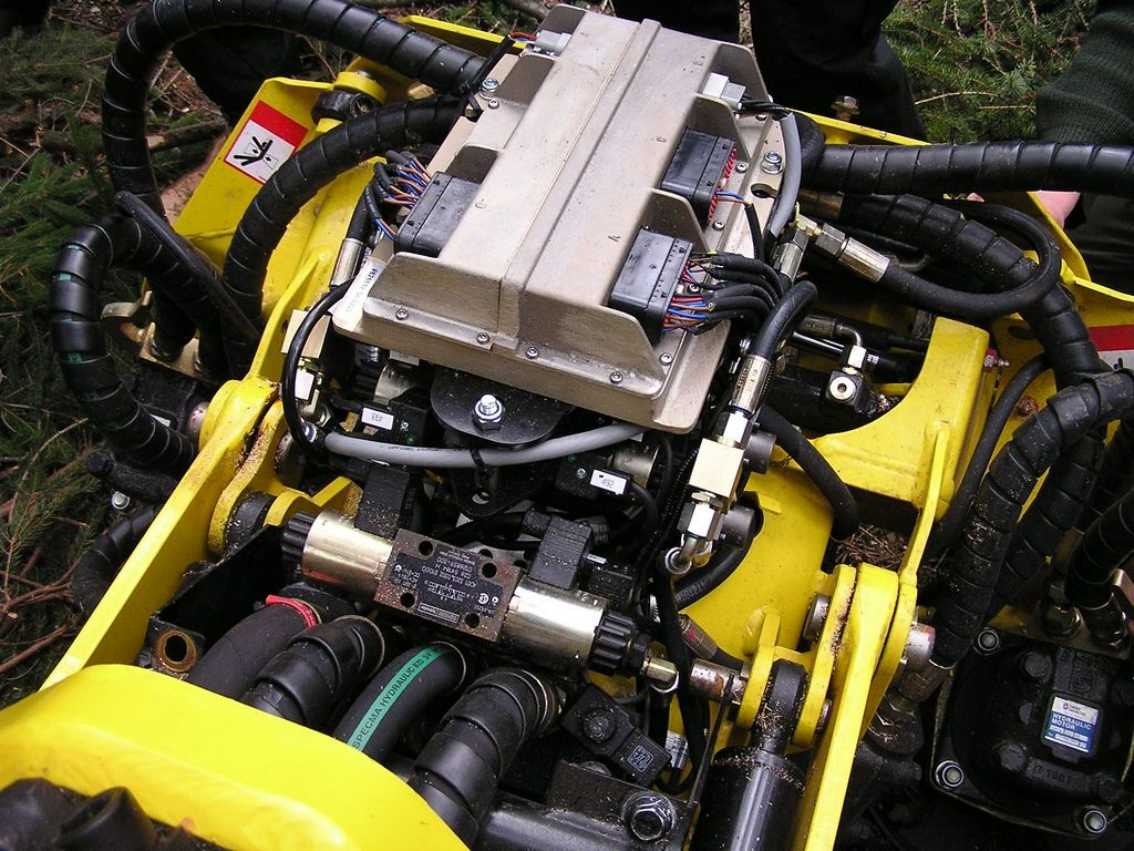
HYDRAULIC 833 3/4"

WIXIAT
1001 3203, D302 BIGDQ
026 54784 H
0126855-300
DENSON HYDRAULIK GMBH
MILWAUKEE, WI, USA

PK F523

LAPP KABEL STÜTTEN

487







B22

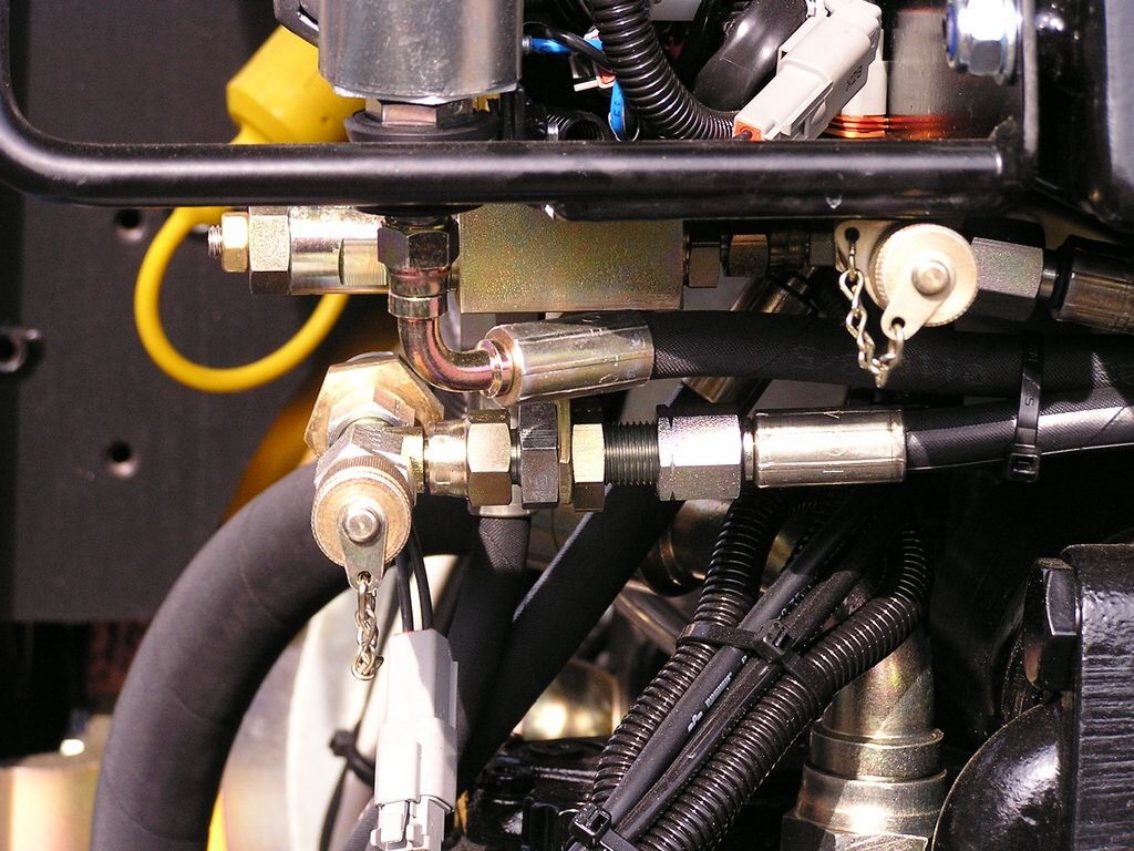
MADE IN U.S.A.



01 72770 069 0



•B 17 12 03







SAE 80W/90

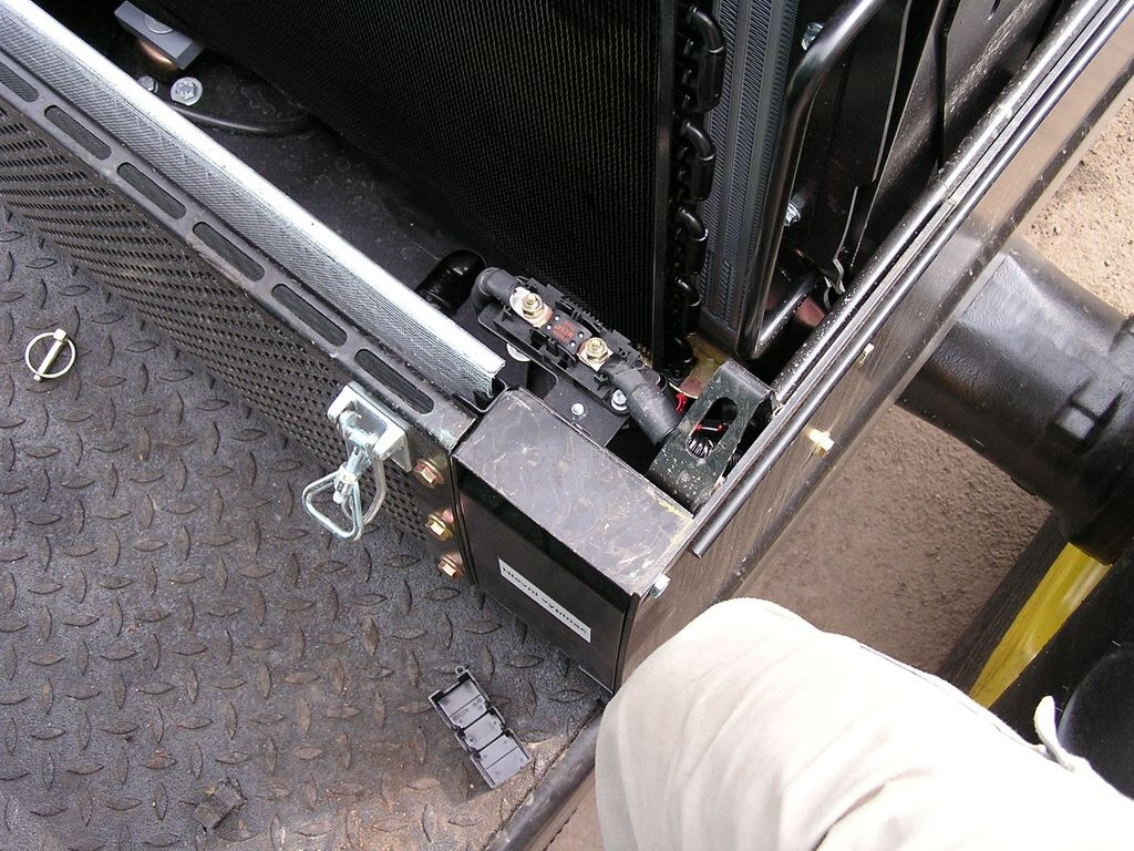


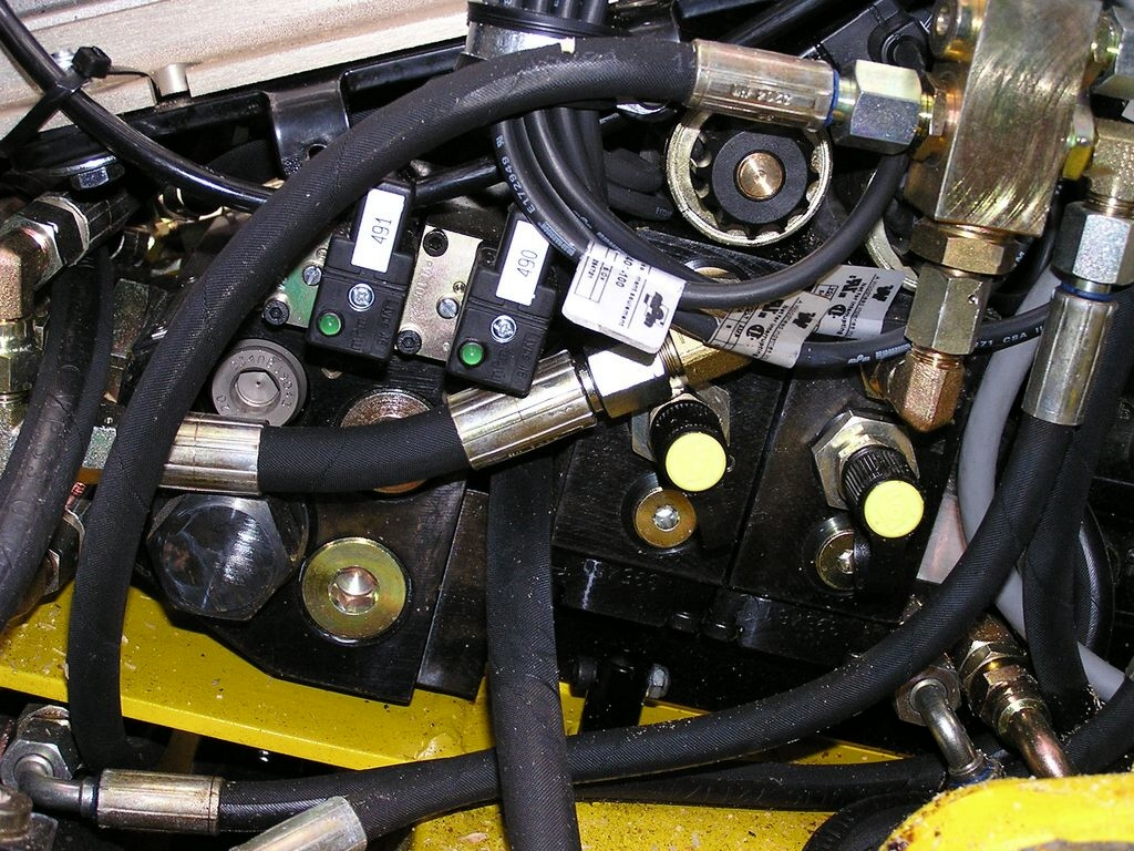
← TÄYTÄ TÄSTÄ
PÅFYLLNING
FILLING
EINFÜLLUNG
REMPLISSAGE



F041429







491

490

001-30
PART NUMBER
JOHN DEERE
TRACTION

D-11
D-11A
JOHN DEERE
TRACTION

71 CRA 11



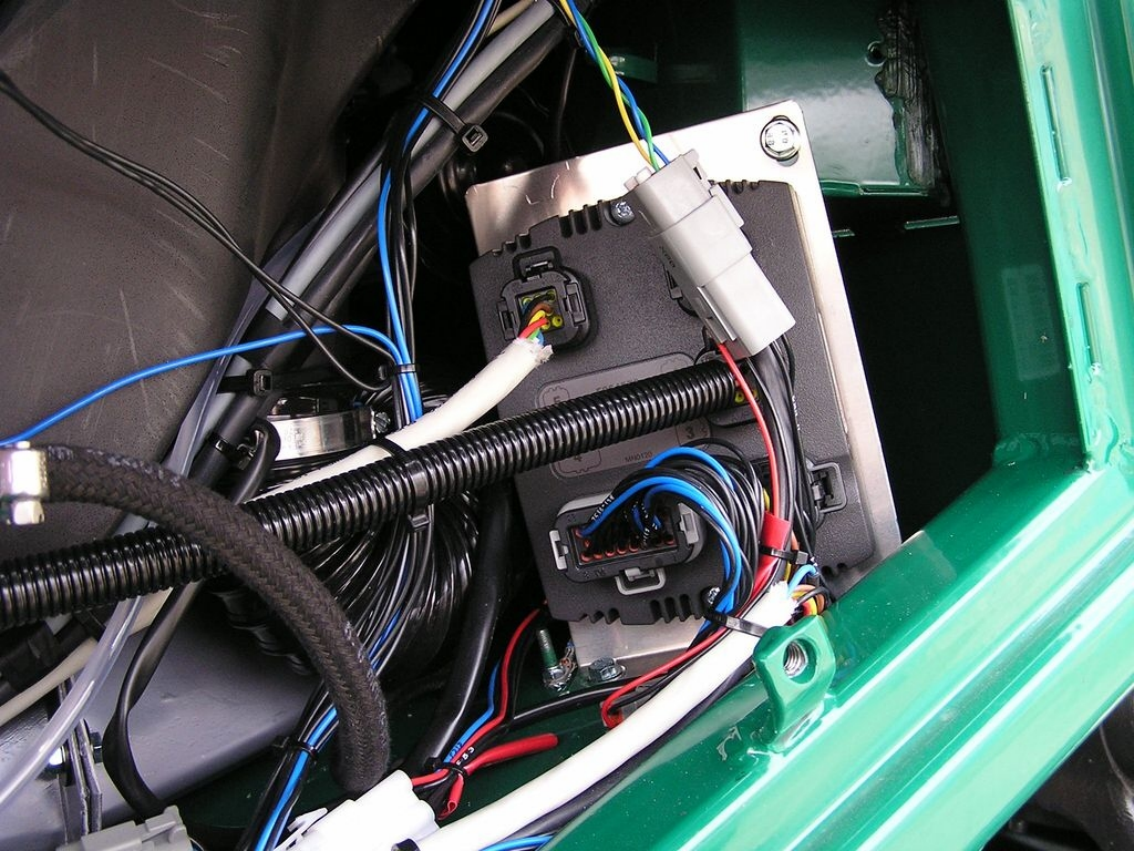
F82685

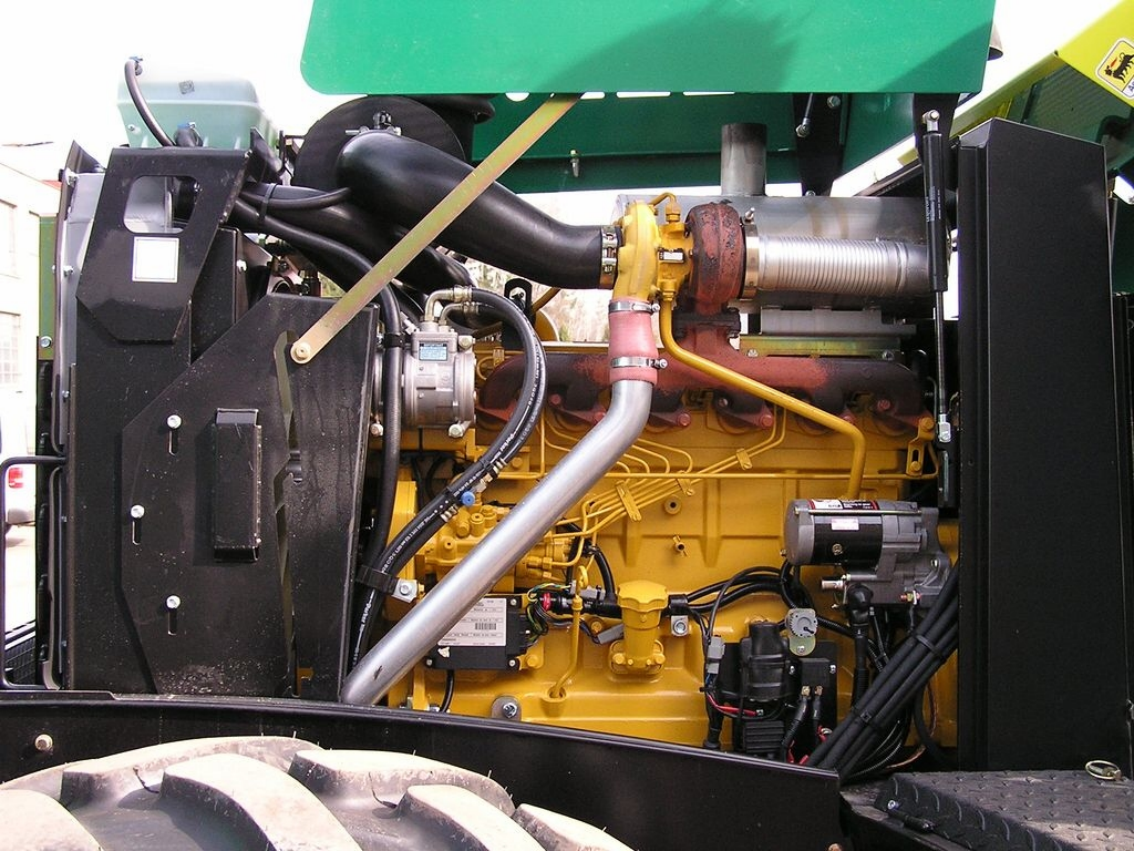
BAWQ/3 90°C 300V - 1633
E1720B R AWM 2088

491
492
493
494
495
496
497
498
499
500
501
502
503
504
505
506
507
508
509
510
511
512
513
514
515
516
517
518
519
520
521
522
523
524
525
526
527
528
529
530
531
532
533
534
535
536
537
538
539
540
541
542
543
544
545
546
547
548
549
550
551
552
553
554
555
556
557
558
559
560
561
562
563
564
565
566
567
568
569
570
571
572
573
574
575
576
577
578
579
580
581
582
583
584
585
586
587
588
589
590
591
592
593
594
595
596
597
598
599
600

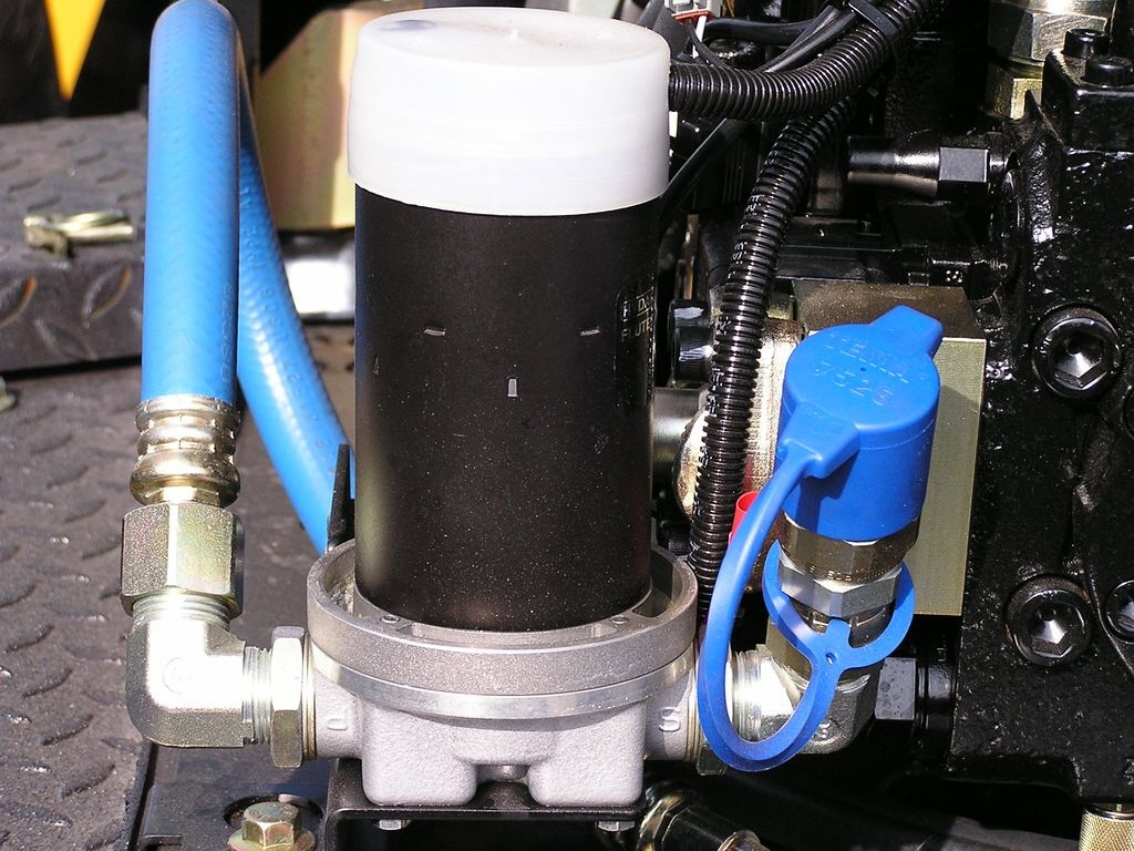
AMMUN ME...
AUTOKUM...
45
W 307











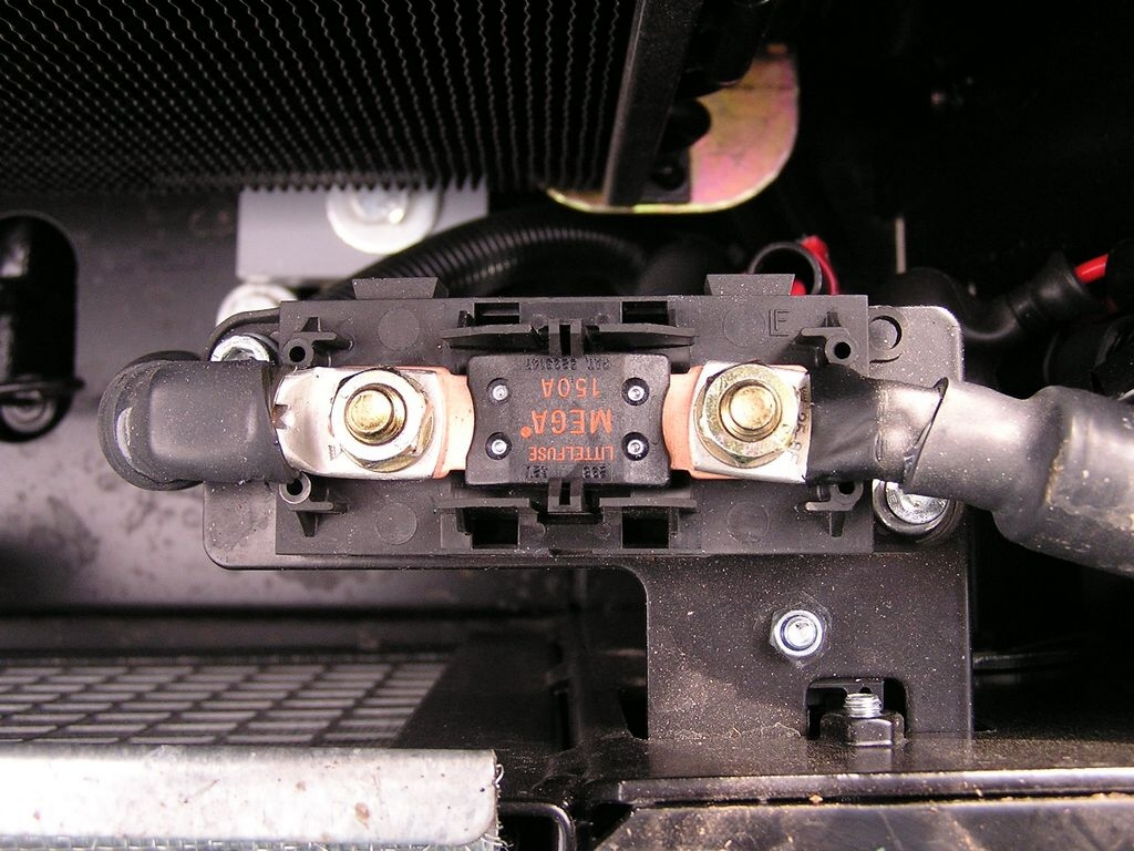








Timb



MEGA 150A LITTELFUSE
388 1A7

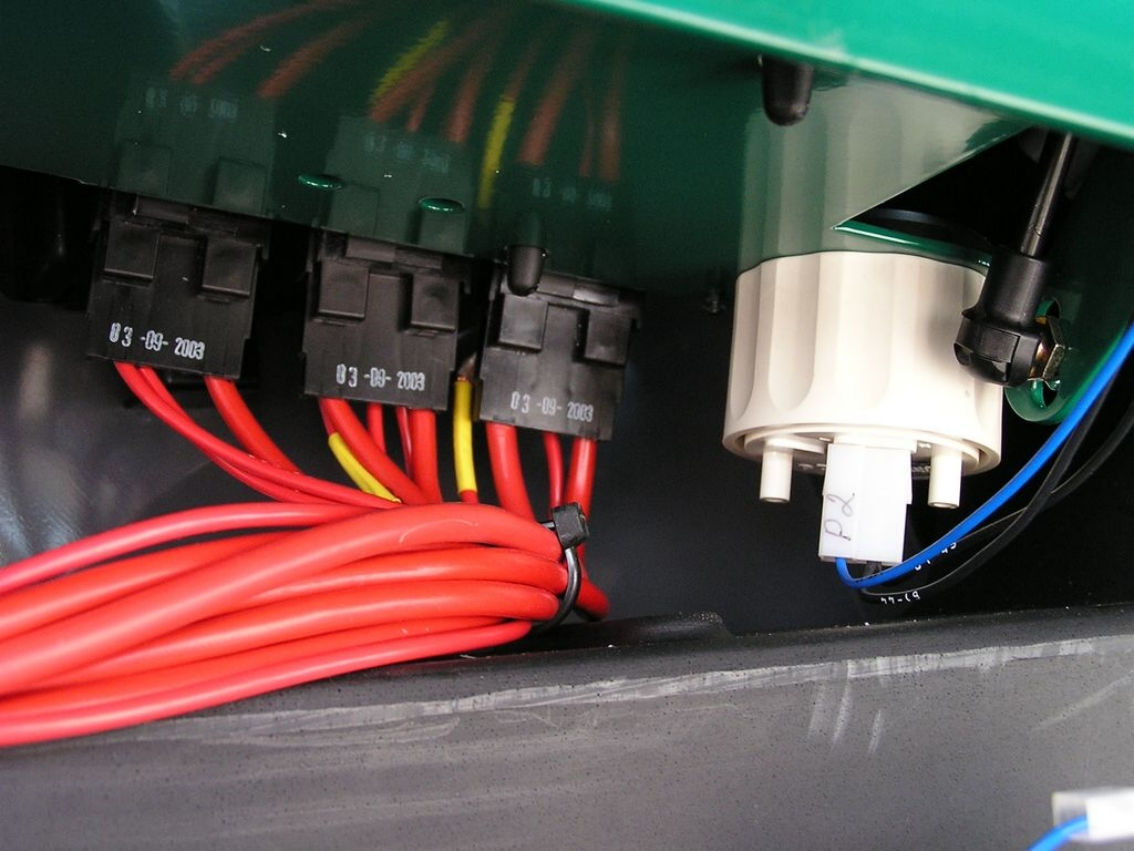
NEBEZPEČÍ
Při údržbě nebo
opravě musí
být vyřazeno
pohonové
hydraulické řízení

The image shows a Timbermatic TMC 6 control panel mounted in a vehicle's cabin. The panel features a color LCD screen displaying a green-themed interface. At the top of the screen, a black box contains the number '9'. Below this, a large white dialog box with a red border is centered on the screen. The dialog box has a blue header with the text 'Poplach TMC 6' and 'Timbermatic 308'. The main text of the dialog asks 'Chcete dokumentovat toto zastavení?' (Do you want to document this stop?). At the bottom of the dialog are two buttons labeled 'Ano' (Yes) and 'Ne' (No). To the right of the dialog, the number '65' is displayed in a large, bold, black font. Below the dialog, a green bar contains the text 'ESC' pro potvrzení, 'ENTER' pro nápovědu' (ESC for confirmation, ENTER for help) and the time '17:06'. At the bottom of the screen, there is a row of icons and a speedometer display showing '0 0 46 84 71 27' with 'km/h' below it. The panel is labeled 'Timbermatic' at the bottom. A white mobile phone is placed on the right side of the panel. The background shows the interior of a vehicle, including a steering wheel and various controls.

A control panel with four buttons: a left arrow, a right arrow, a double-headed vertical arrow, and a yellow button with a person icon.

A control panel with a single yellow button featuring a person icon.

Timbermatic



03-09-2003

03-09-2003

03-09-2003

P2





F3

F4

F5

F6

F7

F8



F9

F10

F11

F12

F13

F14



ZPEČŇNÁ

VZ



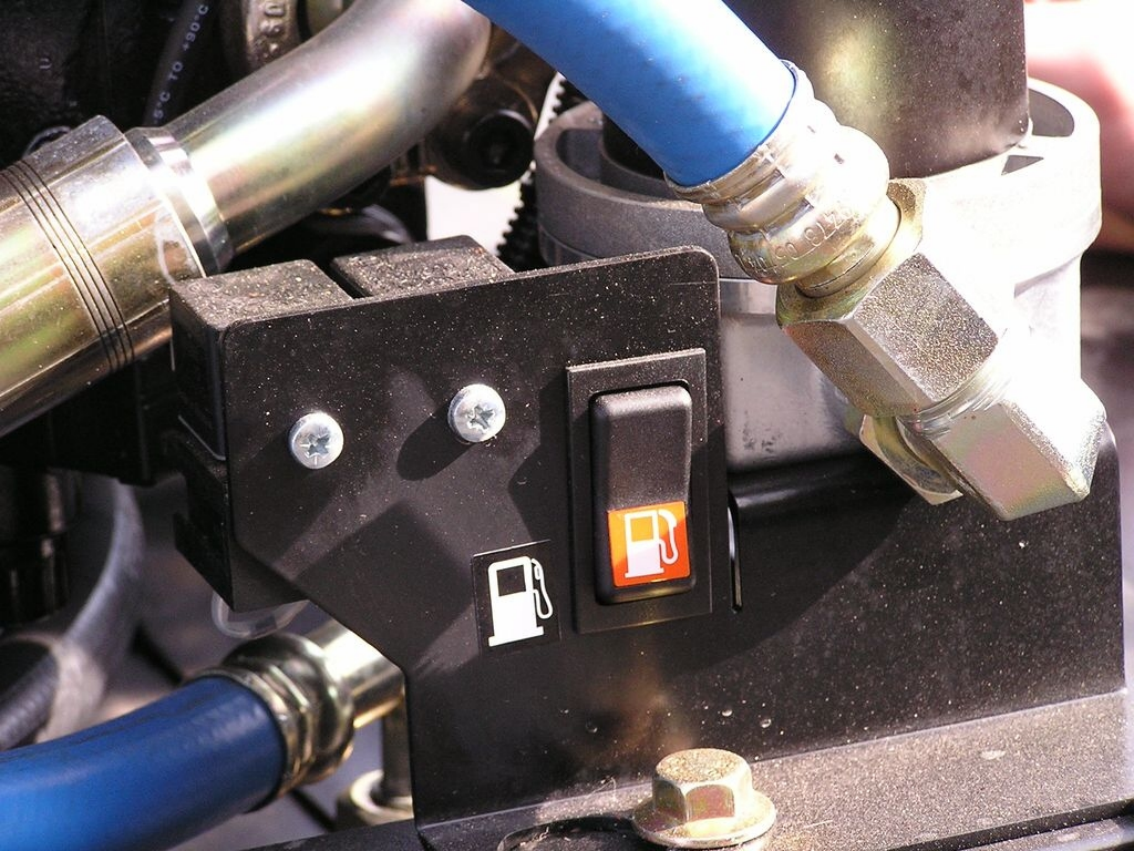


PARALLEL

Timberjack

Timberjack





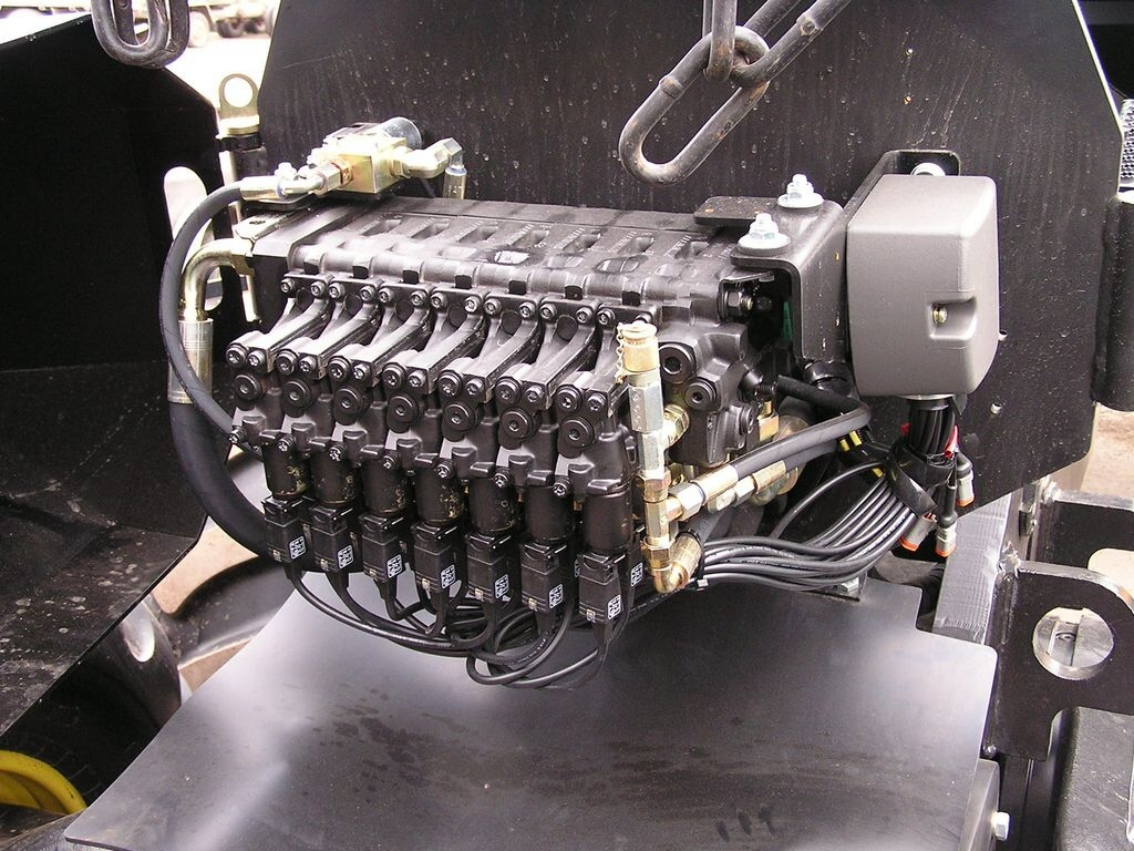


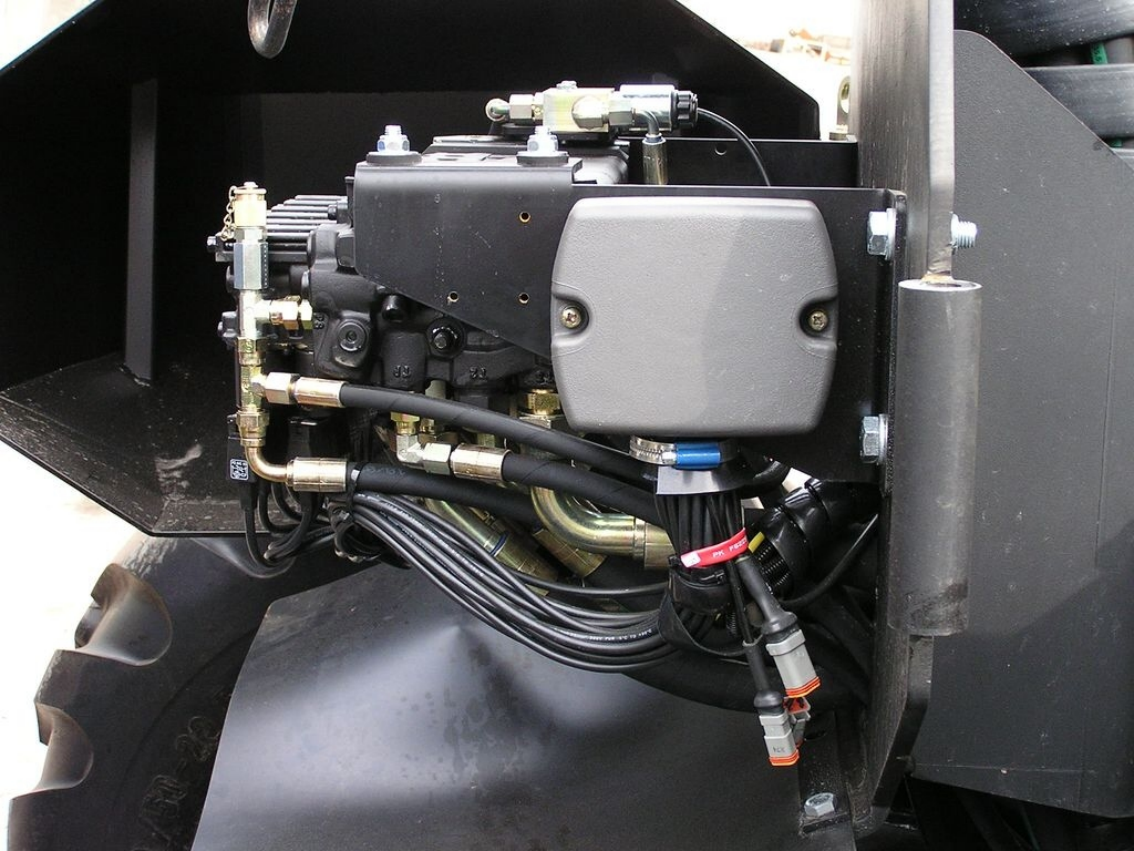
Timberline

VZDÁLENOST 50m











ECU ID LABEL 201204 140

ECU Part Number / Référence de l'ECU	NE518775
ECU Serial Number / Numéro de série de l'ECU	121800
Engine Serial Number / Numéro de série moteur	C60904044022
Part Name	1401202
Salvo número	1401800

AD DO





P026092 Sn-D305

UN RE
OKUM

Timberjack

TJ 180 H 9.7

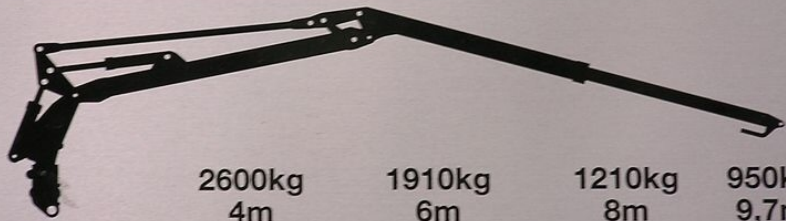
Nr *WJ180HX000272*

Year / Vuosi 2004

TIMBERJACK OY
JOENSUU FINLAND

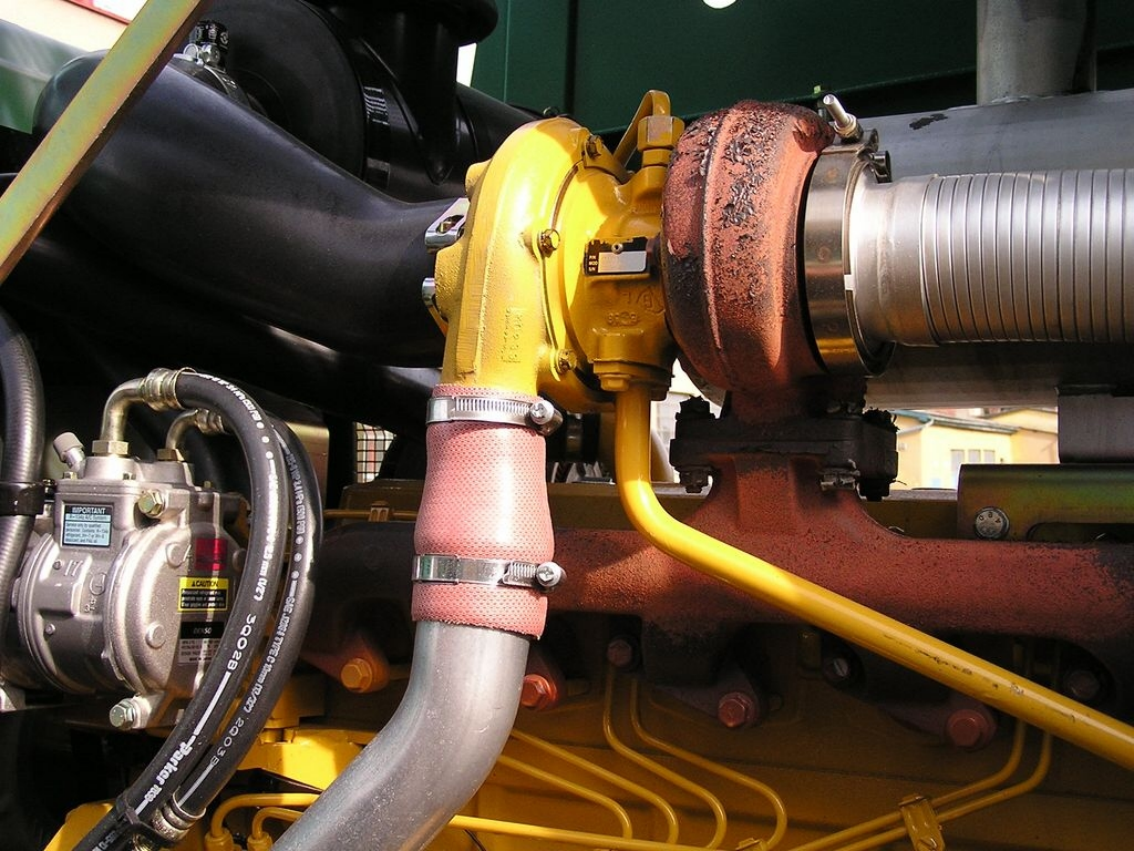
F650318

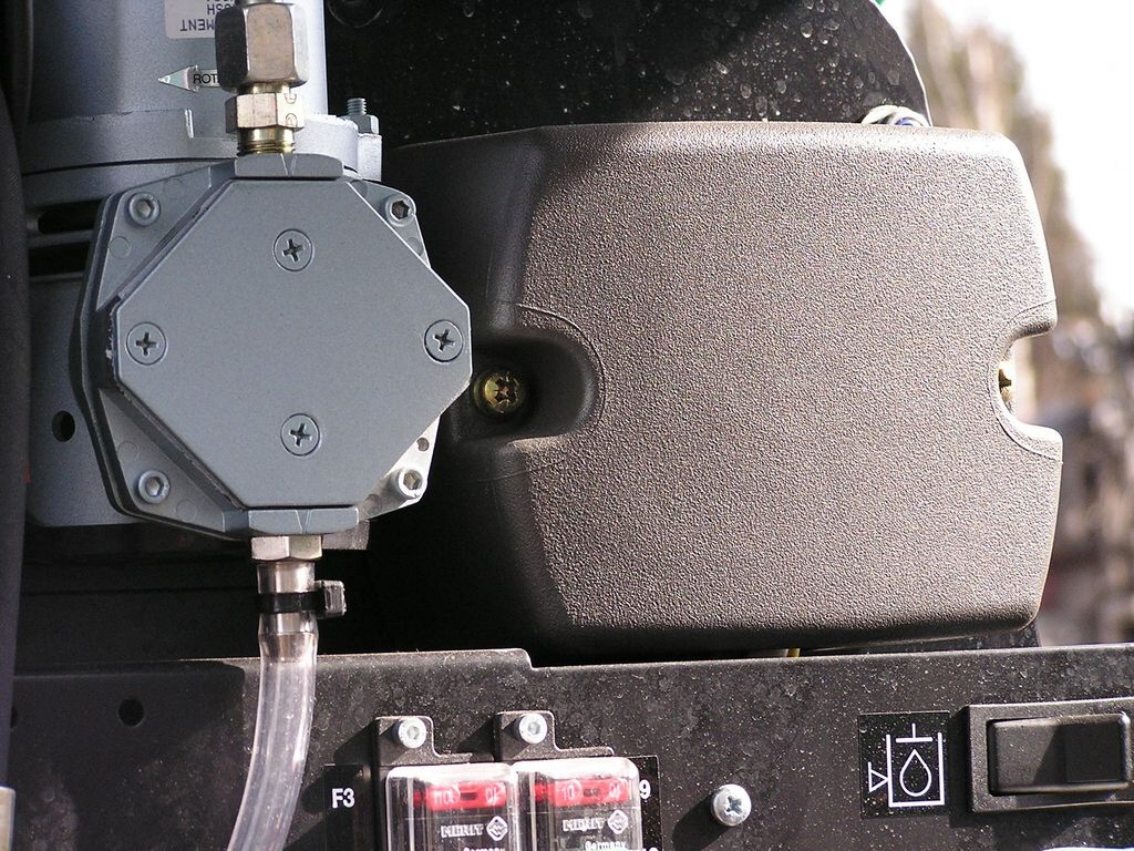
Timberjack



TJ 180 H97







HSS
MENT

POT

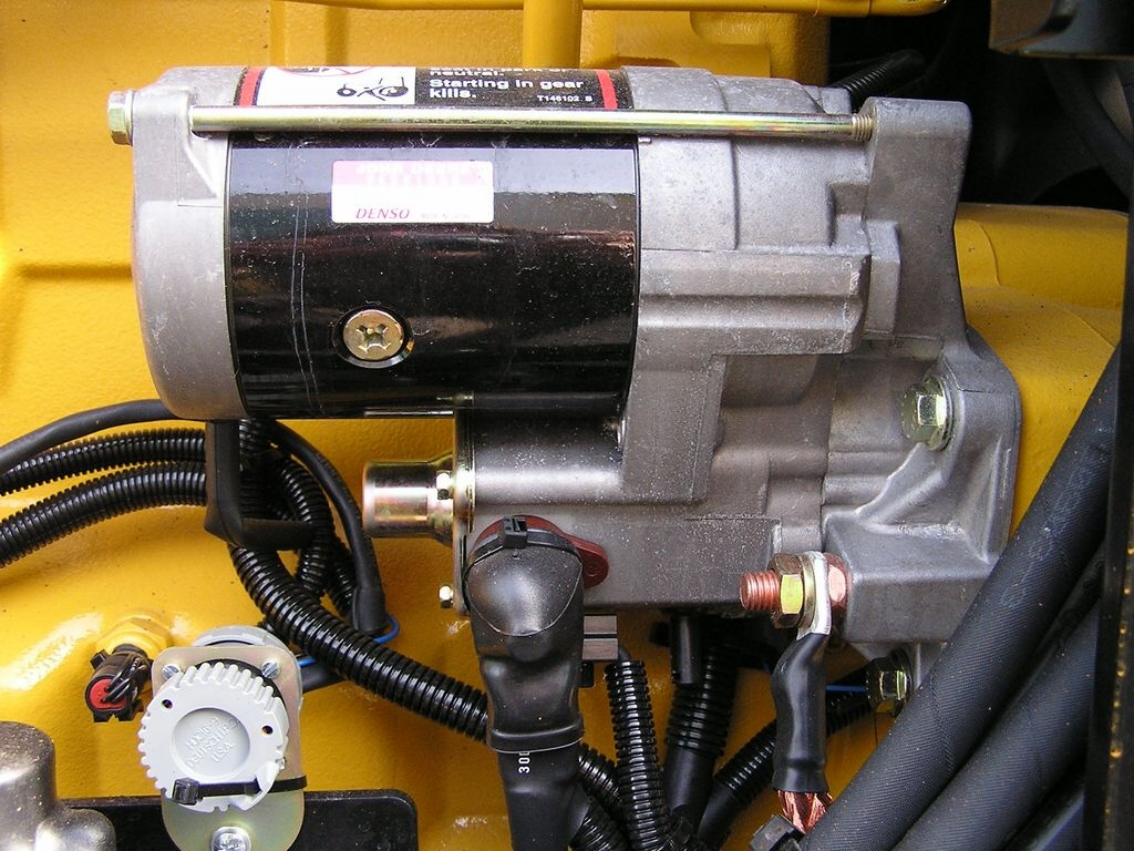
F3

BERLEY
Berley

9





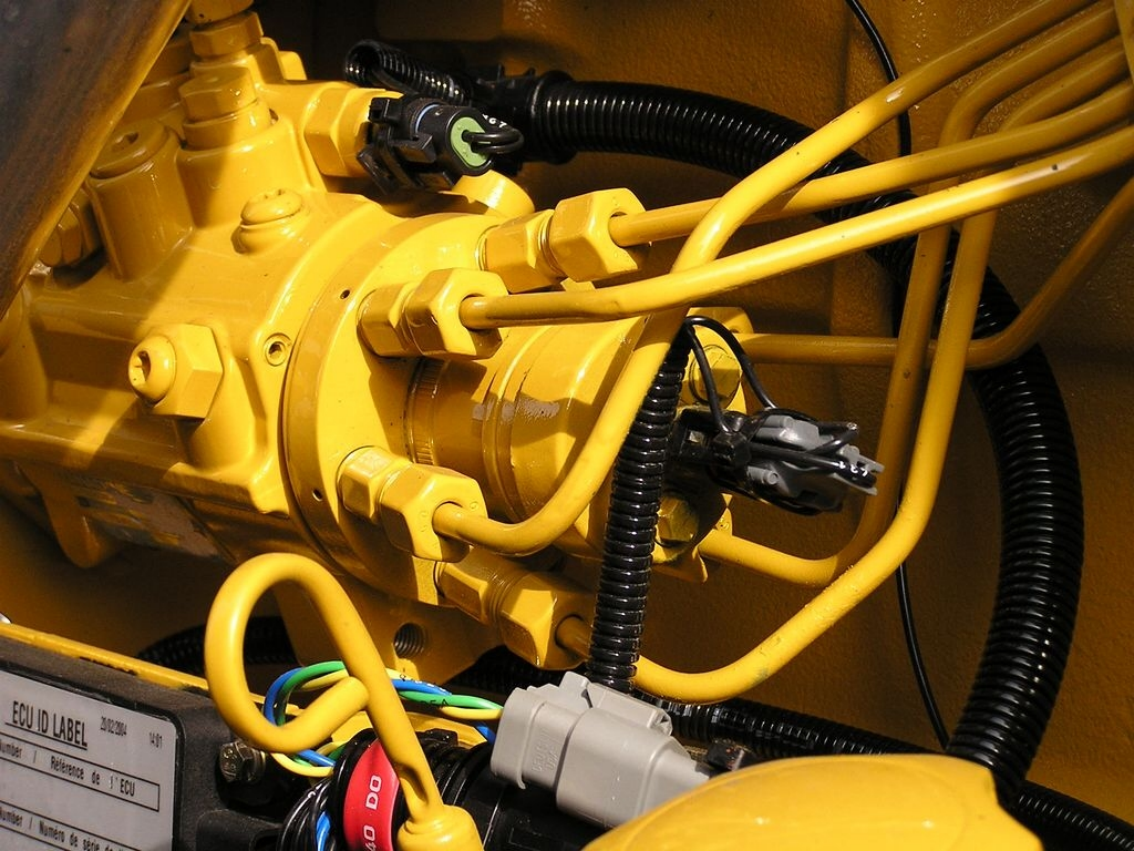


DENSO
Starting in gear
kills.
T148102-8

DENSO



30



ECU ID LABEL 20/02/2004 14:01
Number / Référence de l'ECU
Number / Numéro de série de...

40 DO



JOHN DEERE

RE517181







F9

F10

F11

F12

F13

F14

24VDC

